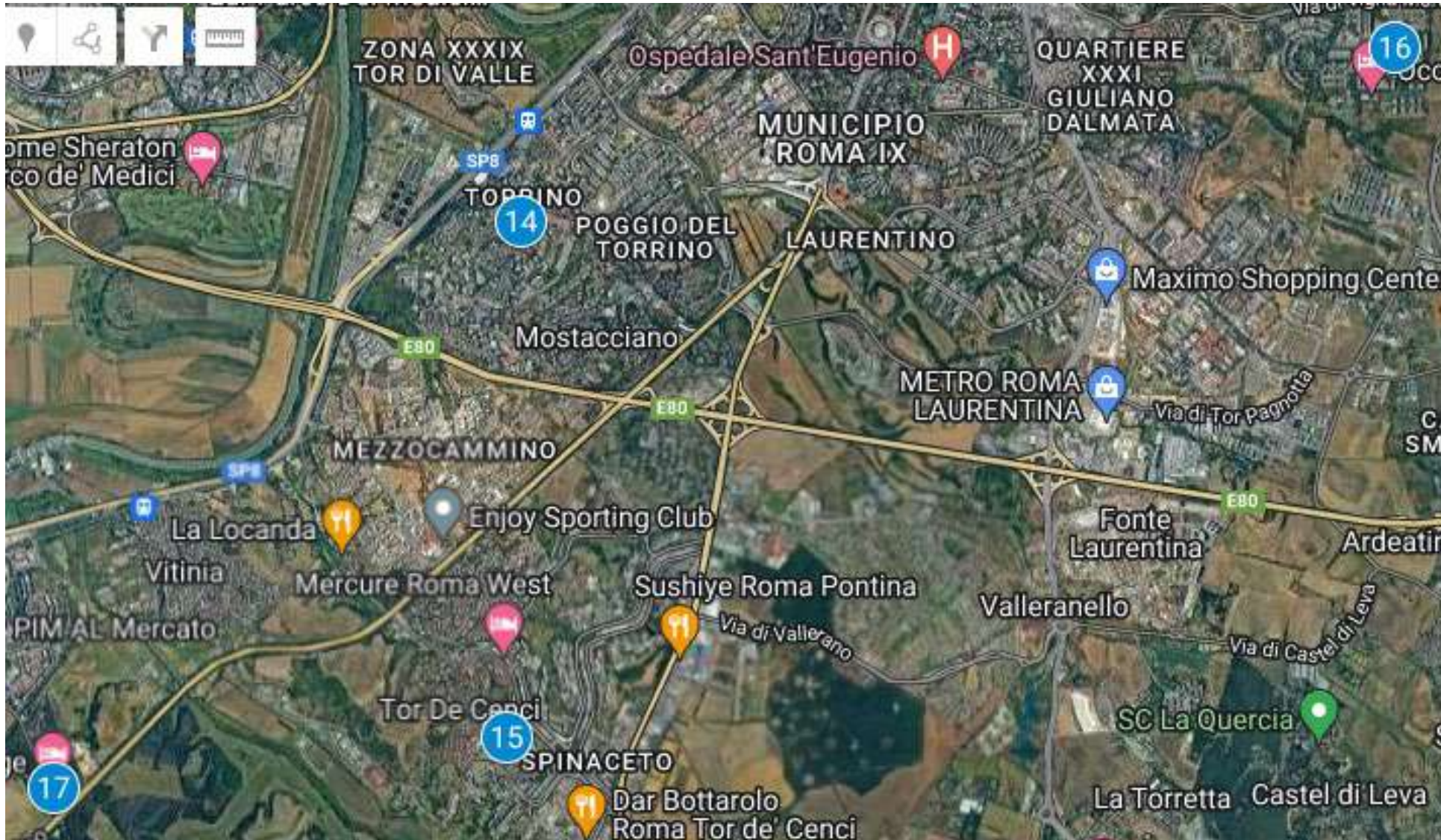


## Overview



1. ToLive S.C., via Grotta Perfetta 101: FUTSAL, VOLLEYBALL, CHEERLEADING DANCE CONTEST
2. Palamunicipio S.C., via Costantino 5: FOOTBALL 11, FUTSAL 5; via Tito 40: HANDBALL
3. Città Futura S.C., via dell'Arcadia 108: BASKETBALL
4. Metro Basilica S. Paolo Paolo and Oratorio San Paolo S.C.: TENNIS
5. ITIS Armellini, Largo Beato Placido Riccardi, 13: TENNIS TABLE
6. Berra S.C., Via Giuseppe Veratti: FOOTBALL 11, ATHLETICS
7. Tennis Sport Libero S.C., Lungotevere Dante 277: TENNIS
8. Campus EUR 1960 S.C., Lungotevere Dante 311: FOOTBALL 11
9. Polisportiva Ostiense S.C.: Lungotevere Dante 3: FOOTBALL 11, TENNIS
10. Metro Marconi
11. Tre Fontane S.C. via delle Tre Fontane 5: RUGBY 7'S
12. Metro Magliana
13. Sport City Life/PalaColle LaSalle S.C., via dell'Imbrecciato 181: BASKETBALL

## Overview



- 14. Zero9 Virgin Active EUR, via Cina 91:  
SWIMMING
- 15. Palatellene S.C., Via Claudio Villa:  
BADMINTON
- 16. PalaFonte S.C., Via Roberto Ferruzzi, 122:  
BASKETBALL
- 17. Championships Fabulous Village, via di Malafede 205

## FROM CAMPING VILLAGE FABULOUS – via di Malafede, 205

To: Nuova Rugby Roma/Tre fontane, ToLive, Palamunicipio, Città Futura, ITIS Armellini, Oratorio San Paolo, Polisportiva Ostiense, Berra, Tennis Sport Libero, Campus EUR Sport Centers

### OPTION A

Go outside the Camping and go left. Walk 200 m and across via Cristoforo Colombo.

Go to the bus stop “Colombo/Malafede”

Catch the bus 709 or 070 direction “Eur Fermi”

Get off at stop “Eur Fermi”

#### **Step 1:**

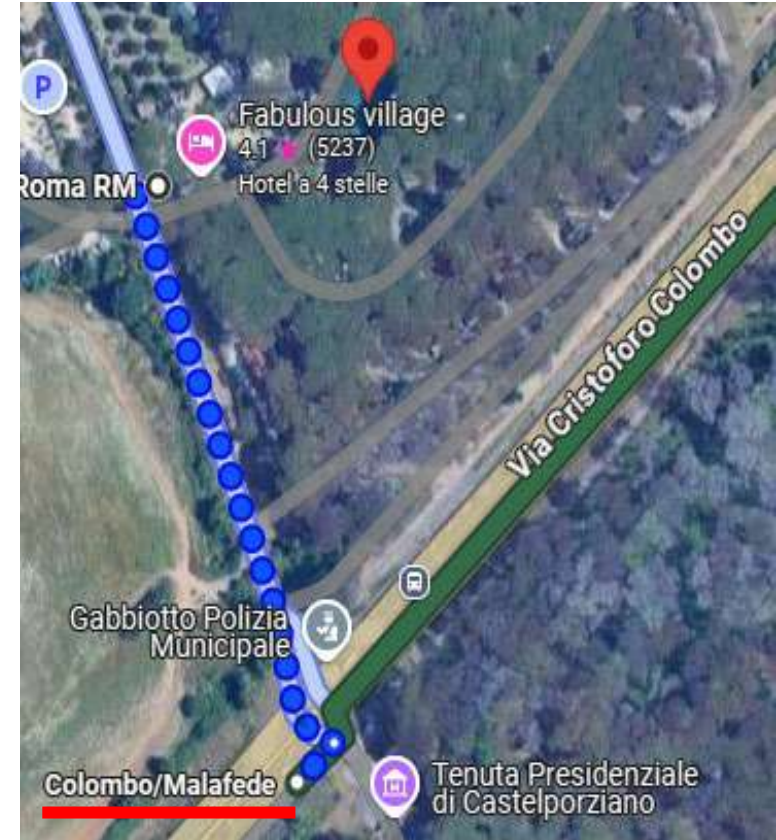
#### **Step 2:**

From Eur Fermi catch the Metro B Line (Blue Line):

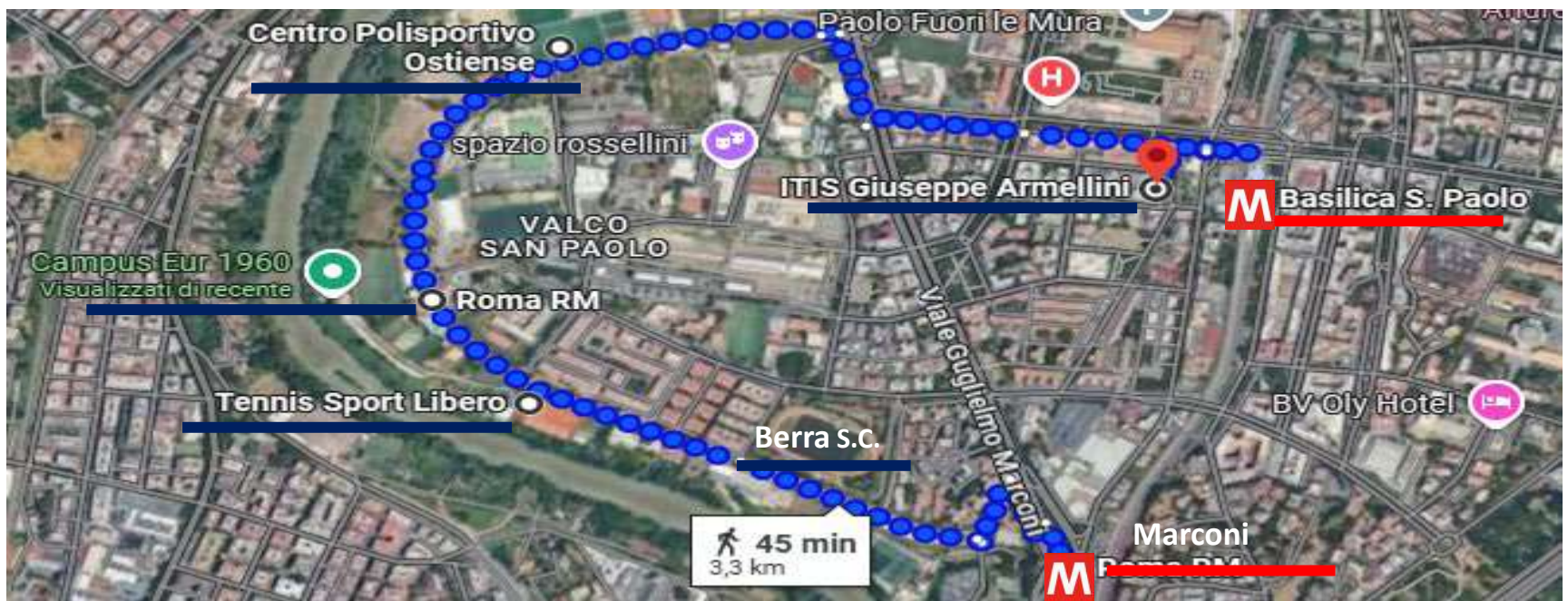
. for 2 stops and get off at «EUR Magliana» to:  
Tre Fontane/Nuova rugby roma sport center

.for 3 stops and get off at «Marconi» to:  
Berra Sport Center, Tennis Sport Libero, Campus EUR sport centers

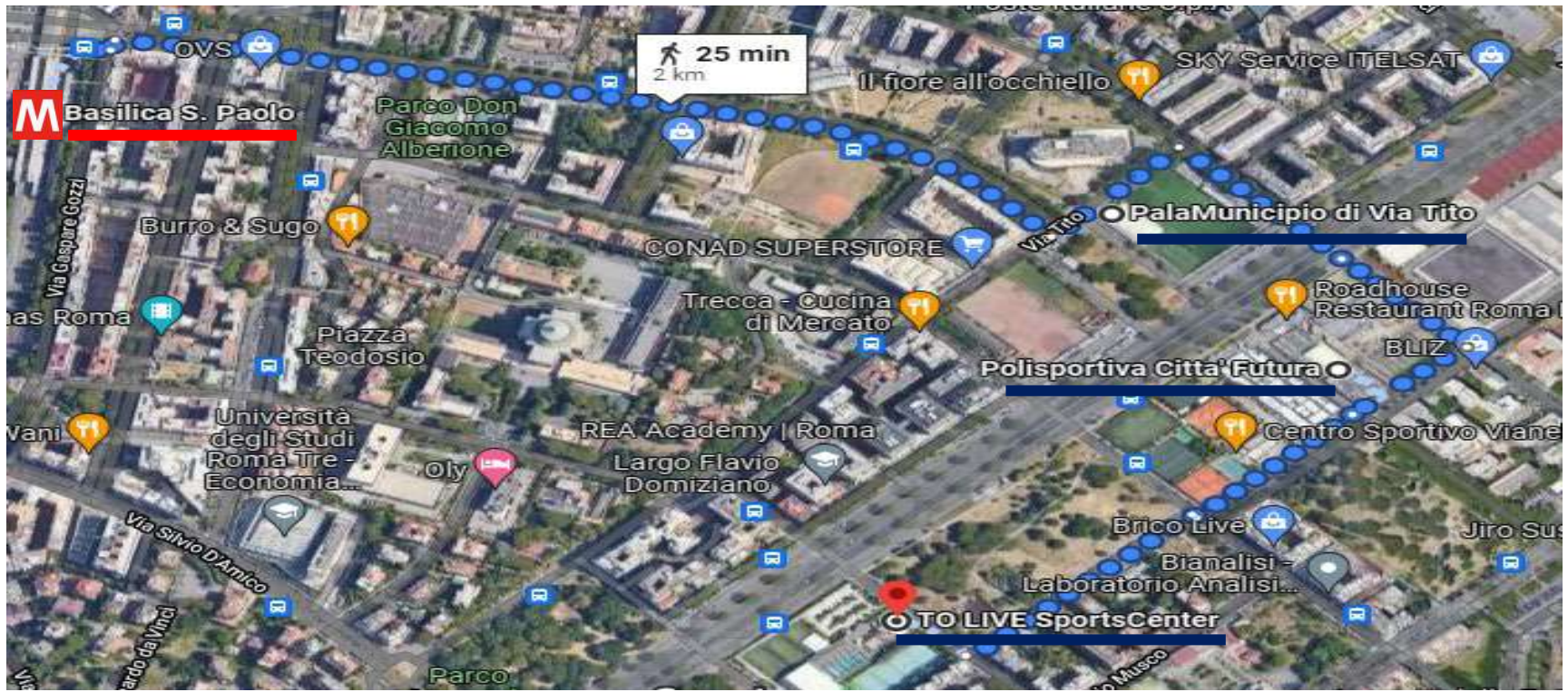
. for 4 stops and get off at «Basilica San Paolo» to:  
Polisportiva Ostiense, ITIS Armellini, Palamunicipio, Città Futura, ToLive Sport Center, Oratorio San Paolo



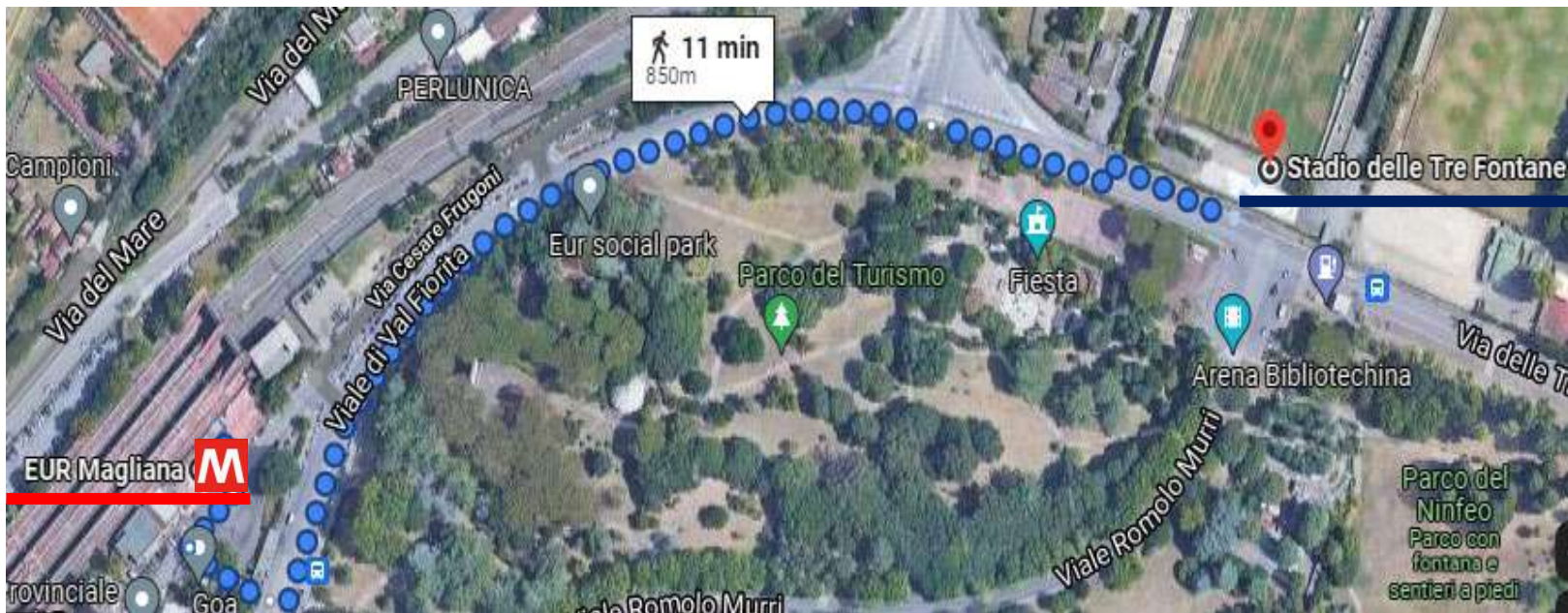
From Metro B «Marconi» and Metro «Basilica San Paolo» To Berra, Tennis Libero Sport Center, Campus EUR, Polisportiva Ostiense, ITIS Armellini sport centers



From Metro B «Basilica di San Paolo» to ToLive, Palamunicipio, Città Futura sport centers



## From EUR MAGLIANA to Tre Fontane/Nuova Rugby Roma Sport Centers



## FROM CAMPING VILLAGE FABULOUS – via di Malafede, 205

To: Tre Fontane/Nuova rugby Roma, ToLive, Palamunicipio, Città Futura, ITIS Armellini, Oratorio San Paolo, Berra, Tennis Sport Libero, Campus EUR, Polisportiva Ostiense Sport Centers and and Zero9 Swimming Pool

### OPTION B

#### **Step 1:**

Go outside the Camping and go right. Walk 1km to the bus stop “Stoppa/Troisi” (in front of the supermarket).

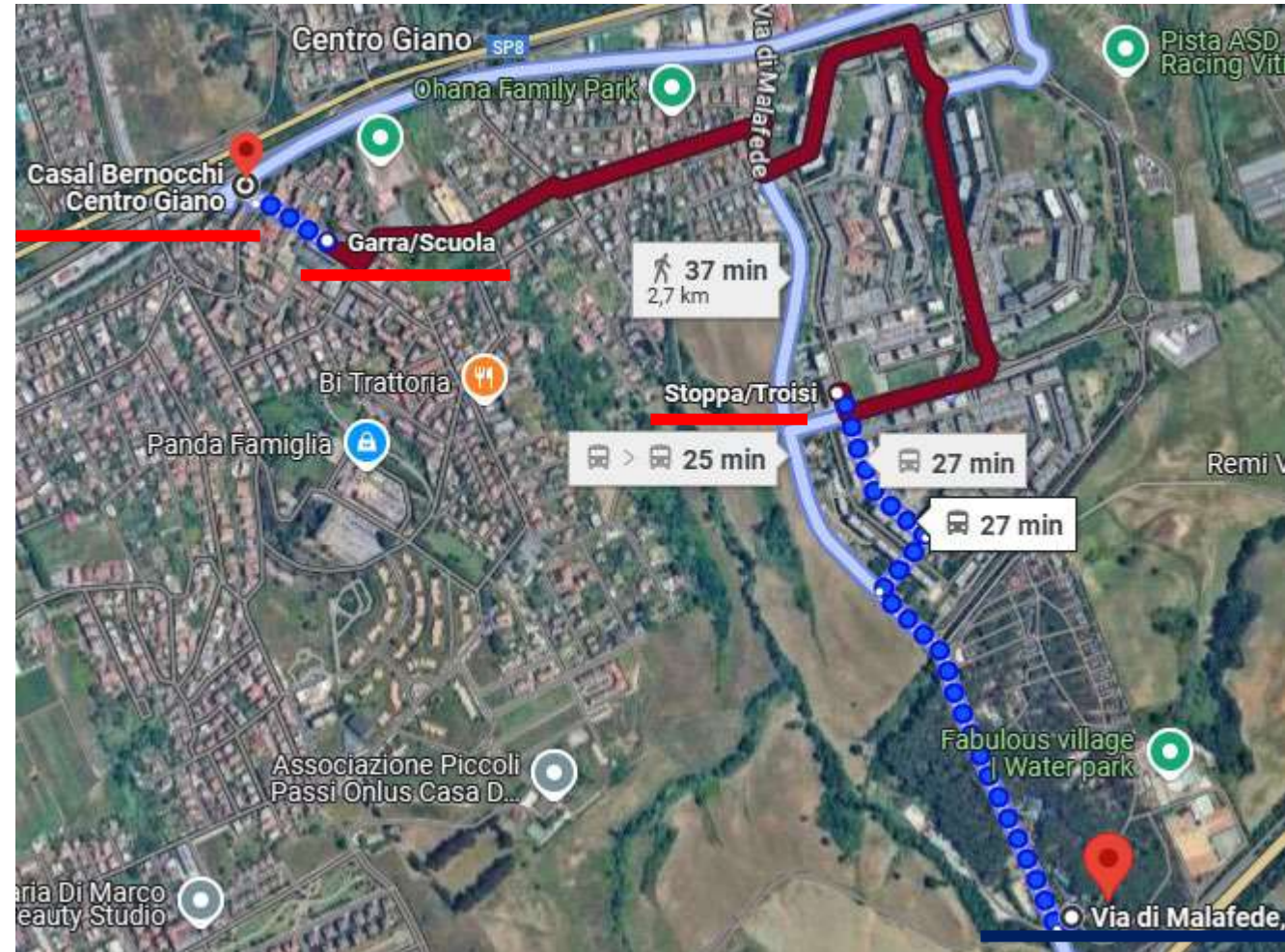
Catch the bus 013 direction “Mellano/Reggiolo” for 10 stops and get off at stop “Garra/Scuola”.

Walk 150 mt. to “Casal Bernocchi Centro Giano» METROMARE METRO STATION

#### **Step 2:**

Catch the METROMARE metro direction «Porta San Paolo» and get of at:

- . Tor di Valle: to Zero9 Swimming Pool
- . Eur Magliana/Mb: to Tre Fontane Sport Center
- . Basilica S. Paolo/Mb: to ToLive, Palamunicipio, Città Futura, ITIS Armellini, Berra, Tennis Sport Libero, Campus EUR, Polisportiva Ostiense

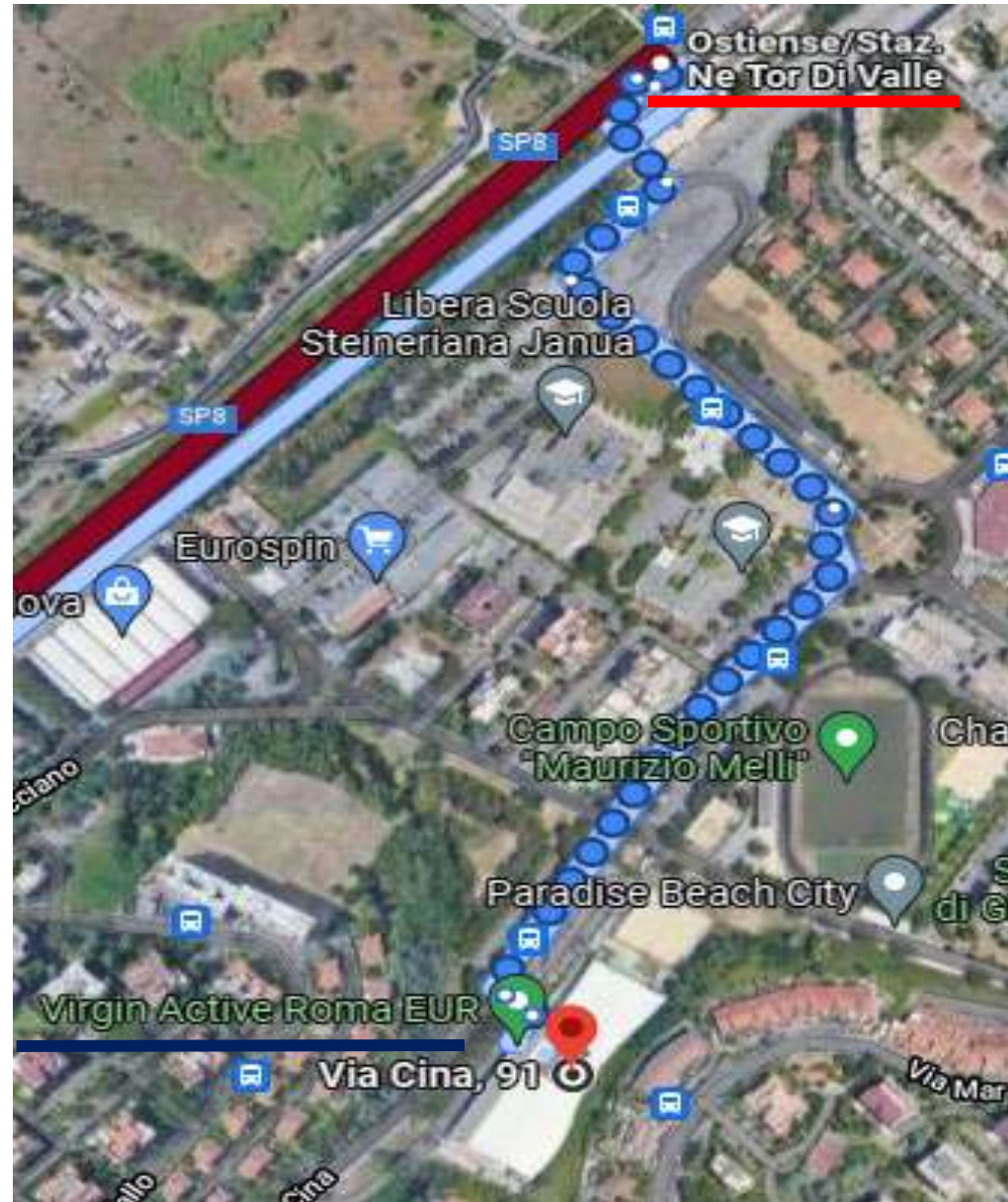
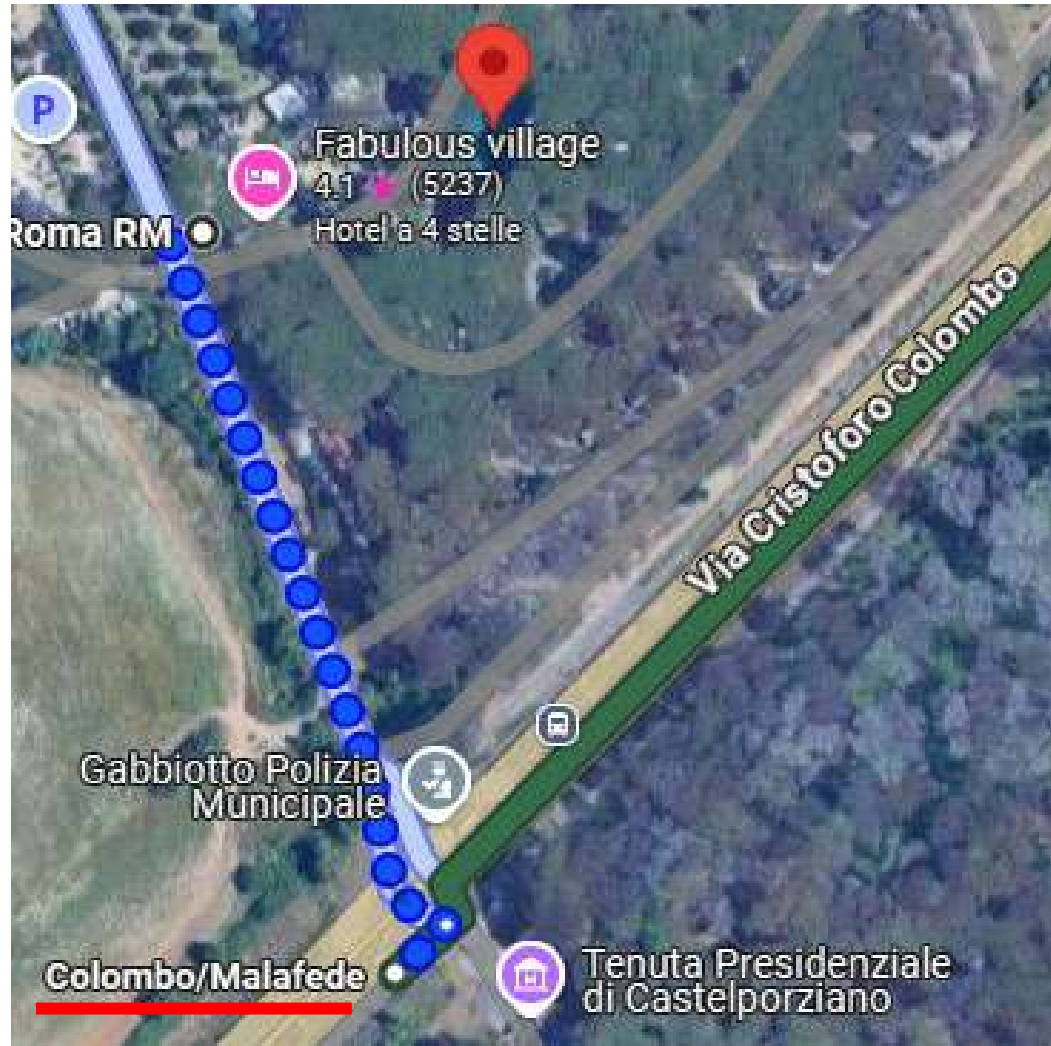


## To Zero9 – Swimming pool

Go outside the Camping and go left. Walk 200 m and across via Cristoforo Colombo. Go to the bus stop “Colombo/Malafede”.

Catch the bus 712 direction “Eur Fermi MB” for 5 stops.

Get off at stop “Ostiense/Staz.Ne Tor Di Valle». Walk 700 mt.



## To Sport City Life Sport Center

Go outside the Camping and go left. Walk 200 m and across via Cristoforo Colombo. Go to the bus stop “Colombo/Malafede”. Catch the bus 709 direction “Eur Fermi MB”. Get off at “Arte/Aeronautica». Walk 2 minutes and go to the bus stop «Aeronautica/Arte» and take the bus 31 direction «Clodio». Get off at «Newton/Papa Leone». Walk 800 mt.

